

**Sensor**  
with weight activated  
hydraulics



Part No 2SR500

**Sensor Profile**  
with weight activated  
hydraulics and  
specialist software



Part No 2SR501

**Additional components to compliment  
and support the use of the Sensor and  
the Sensor Profile Knee Units**



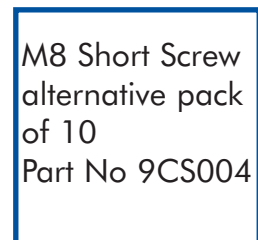
Tube Clamp  
Part No 6PC506



Aluminium Tube  
Part No 6PC509  
250mmx30mm dia.



Knee Pyramid  
Part No 6PC508



M8 Short Screw  
alternative pack  
of 10  
Part No 9CS004

Sensor, Sensor Profile and the associated components in this literature are suitable for amputees weighing up to 125 Kg



**ORTHOEUROPE**

The best solutions  
for users and practitioners

**ORTHOEUROPE**

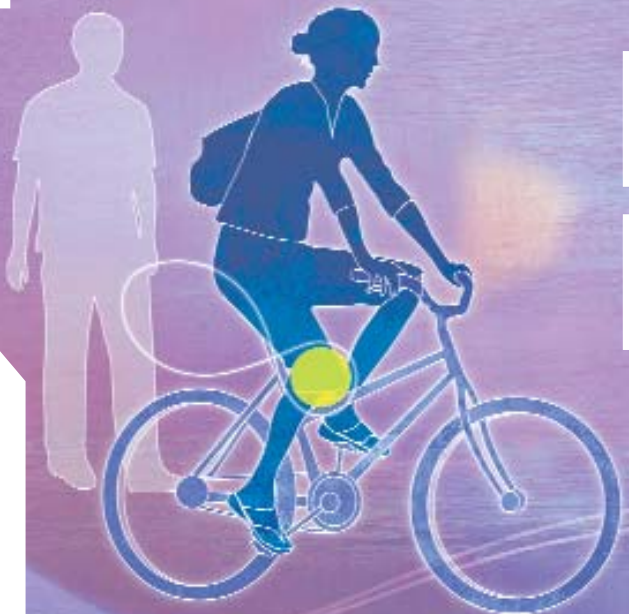
Mill Lane, Alton, Hampshire GU34 2PX, Tel: 01420 83294 Fax: 01420 80068  
e-mail: sales@ortho-europe.co.uk www.ortho-europe.co.uk

**SENSOR INCORPORATES A HIGHLY SOPHISTICATED HYDRAULICS MANAGEMENT SYSTEM FOR THOSE WHO DEMAND HIGH PERFORMANCE. FOR **SENSOR PROFILE** A SPECIALIST ELECTRONICS PACKAGE WILL TAKE REHABILITATION MANAGEMENT TO A NEW DIMENSION**



## SENSOR

Versatility  
Complete Control  
Total Confidence



The weight activated hydraulics system is reliable and versatile with a range of adjustments to suit the new amputee from the first stages of rehabilitation right through to optimum mobility.

**The new design** is engineered to support the hydraulics system and the controls are designed for easy and positive adjustment.

Sensor hydraulic technology allows natural gait and walking over uneven ground, down slopes and stairs 'foot over foot' with ease and confidence. It is even easy to cycle, stop and dismount safely without making any adjustments whatsoever. The unique terminal impact dampening provides the wearer a sense of position of the prosthesis just before heel strike. So whether working or playing Sensor gives the confidence to live an active life.

Sensor will allow the amputee to walk naturally with changing speeds and experience a smooth movement throughout the gait cycle, with little effort.

**SENSOR KNEE with weight activated hydraulics**

Part No  
**2SR500**



## SENSOR PROFILE

Evidence Based  
Rehabilitation  
Taken To  
A New  
Dimension



Using specialist electronics technology Sensor Profile will enable the Clinical Team to understand the current level of activity and to plan a realistic and structured rehabilitation programme.

A combination of sophisticated hydraulics and specialist electronics take amputee mobility and rehabilitation management to a new dimension with the Sensor Profile.

Ortho Europe has a dedicated team of Sensor product specialists for technical and practical support, including an Amputee Demonstrator who is available to work alongside the Prosthetist and Physiotherapist to provide practical advice and help for the amputee.

**SENSOR PROFILE KNEE with weight activated hydraulics and specialist software consisting:**

- Knee unit
- Software CD
- Interface Box



Part No  
**2SR501**

